

# resill!on

Assure. Secure. Innovate.

## Single Pane of Glass: A unified dashboard to bridge the gap between vulnerability identification and remediation

A pioneering managed platform to significantly reduce your risks and enhance your visibility and control.

## REMEDICATION INNOVATION

Single Pane of Glass is an advanced, managed platform that gives you a holistic view of all your cyber security risks, encompassing your corporate, customer and product security at a glance. Its single pane of glass provides real-time status updates, supporting your teams to streamline and accelerate your remediation operations (RemOps) processes.

Single Pane of Glass' innovative capabilities immediately reduce your risks through intelligent aggregation, significantly reducing remediation workloads (possibly by up to 90%+). The platform then rapidly prioritises these aggregated risks and automates your entire RemOps processes, so the right risks are dealt with by the right teams within your defined acceptance windows.

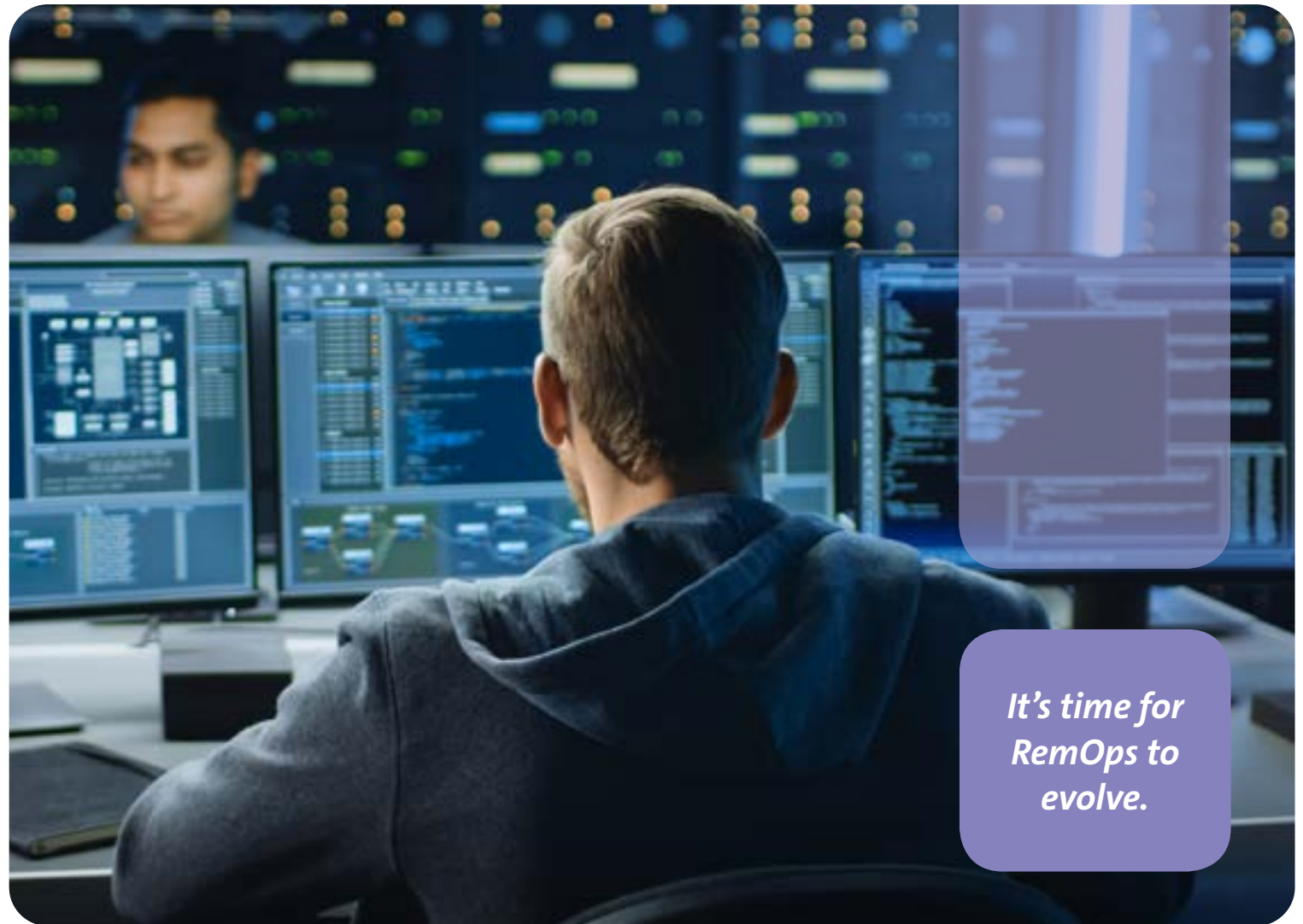
Your risks and RemOps processes in action are all visible at a glance, enabling you to stay in control. The platform's comprehensive reporting capabilities also enable you to track and report on a myriad of metrics, from vulnerability trends to SLA compliance.

# How confident are you in your cyber security vulnerability processes?

**Cyber security testing does an excellent job of identifying threats and issues but doesn't necessarily address them. Instead, it generates a long list of decisions and actions without any guidance on prioritisation. How do you calculate the risk of every vulnerability rapidly? Which issues do you fix immediately, and which can you afford to live with?**

Inadequate RemOps processes can leave organisations wide open to vulnerabilities and risks rather than solving them. Without the right level of visibility and 'noise' filtering, it's challenging for organisations to stay on top of defences - let alone proactively address issues quickly. The lack of transparency also leads to increased costs and complicates resource prioritisation.

Enterprises with large estates and multiple assets, as well as software development organisations, are especially likely to have intricate security requirements and management needs that call for more effective and managed RemOps processes.



*It's time for  
RemOps to  
evolve.*

# The challenges of realising visibility and control

Building a robust cyber security posture can be stressful, slow and complex because of the sheer volume of information and range of teams involved. 'Difference' describes the key hurdle. Organisations often have to tackle multiple data sources from different products, all doing different things and delivering different information. On top of this, different teams have different objectives and responsibilities.

**Our customers tell us this creates the following challenges:**



## Reducing false positives

When cyber security tools work independently, there's little scope to double-check the validity of flagged vulnerabilities, resulting in false positives that impact monitoring efficiency.



## Trouble-shooting varied issues

Teams managing RemOps don't always have the specialist skill set, knowledge and experience to solve issues across the lifecycle of collecting, consolidating, choosing, routing, receiving, remediating and reporting.



## Extracting maximum ROI

These inefficient and laborious approaches often fail to realise the full capabilities of the cyber security tools in their portfolio and the most effective ways to use staff resources.



## Effective prioritisation

A deluge of information and flagged vulnerabilities are difficult to manage and prioritise effectively. Overwhelmed by the 'noise' of continual information dumps, organisations struggle to spot urgent incidents.



## Laborious processes

Without a comprehensive RemOps solution, the identification, remediation and validation stages are intensely manual and time-consuming, consuming resources that could be better deployed elsewhere.



## Delivering reliable compliance

Operating a complex mix of cyber security tools and solutions raises the possibility that some vital action could fall between the gaps of legislative requirements, triggering potentially harsh consequences.



## No unified view of cyber security information

Organisations often lack a single source of truth for understanding their cyber security posture, leading to blind spots and inefficiencies.

# Get a Single Pane of Glass view

Drawing on our deep understanding of the many corporate, product development and service security challenges you probably face, we've created the managed Single Pane of Glass platform to give you a holistic view of your entire cyber security product suite. This market-leading development is designed to streamline and accelerate your RemOps processes to transform your ability to manage and remediate risks efficiently.

Single Pane of Glass can support all popular security products. It delivers a comprehensive end-to-end RemOps solution to take the load from you. It starts by integrating your existing cyber security solutions into Single Pane of Glass so you can automate your data ingestion into a single view. It then significantly reduces the noise via intelligent aggregation of risks and automatically creates manageable tickets. Automated workflows then route these tickets to the correct resources for action and provide recommendations for fixes.

A single, customisable dashboard and broad and bespoke reporting capabilities give you a clear view of the data you need and control over your risks.

**Single Pane of Glass is your route to reducing the gap between identifying risk and applying a resolution.**



## Scope out the potential

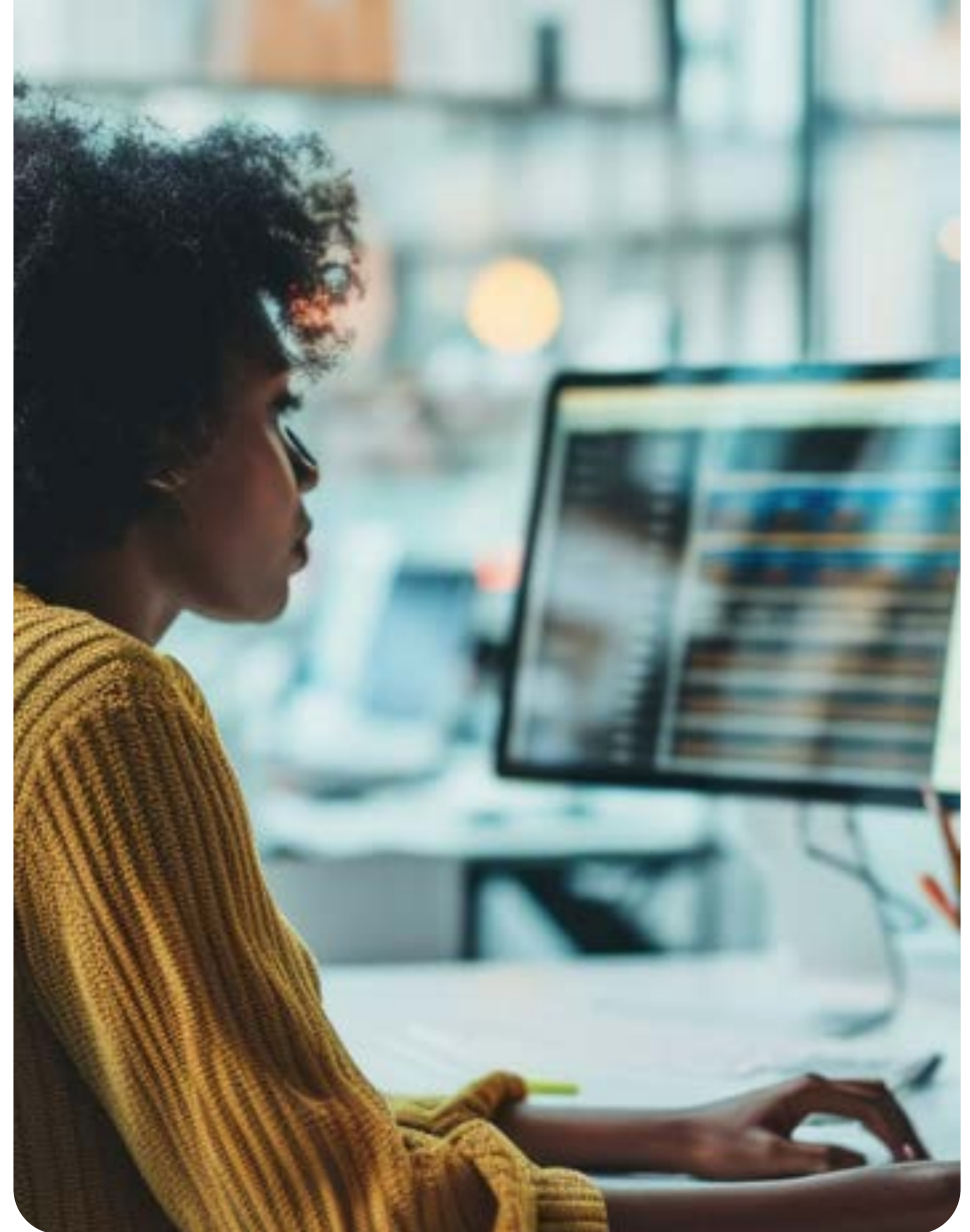
Using Single Pane of Glass, an organisation can reduce the noise of potential vulnerabilities by a average of

**90%**

As a result, a formidable wave of

**10,000**

vulnerabilities across a network can be reduced rapidly to 1,000 that need further investigation and remediation.



# Transform your RemOps with Single Pane of Glass

The comprehensive nature of our Single Pane of Glass platform unlocks significant and valuable benefits for your cyber security posture. It empowers you to streamline your cyber security operations to enhance efficiency, improve risk management, increase productivity and strengthen compliance.

**Check out the benefits:**



## Informed decision-making

Real-time visibility and comprehensive reporting provide the insights cyber security teams need to make strategic security decisions.



## Reduced time to remediation

Accurate vulnerability identification, intelligent task routing and advanced prioritisation deliver actionable remediation tasks to accelerate risk mitigation.



## Lower operational costs

Decreased reliance on manual processes and improved efficiency and productivity result in cost savings on operational resources.



## Improved risk management and security posture

Proactively identifying and resolving vulnerabilities reduces the risk of security breaches and enhances overall security. Robust monitoring and prioritisation shared via a unified view allow cyber security teams to grasp the security landscape completely.



## Easy to use

A customised dashboard integrates seamlessly with your existing security tools and communication platforms to perfectly suit your organisation's requirements and gives easy access to any required data. It clearly flags the top priorities for remediation, simplifying the monitoring role and reducing the pressure on specialists.



## Enhanced compliance

Our platform's comprehensive reach and reporting capabilities that track incident paths make it easy to demonstrate compliance with SLAs and regulatory requirements. This relieves the pressure on compliance officers to investigate, check and double-check accuracy.



## Boosted efficiency and productivity

The managed platform eases workloads and makes sure every action is necessary, making teams more efficient and productive. Automated workflows combined with the managed aggregation and deduplication of findings reduce manual tasks and focus effort on critical issues.

# Who will benefit most from Single Pane of Glass?

**Professionals across a broad range of job functions are responsible for different aspects of cyber security, and Single Pane of Glass can support them all.**

Generally, the core user profile includes senior stakeholders in corporate cyber security management, information security and product development. These leaders tend to use our platform to make strategic decisions, whereas project managers are more likely to use Single Pane of Glass to manage defined areas of an organisation's cyber assets.

**Feedback from our customers has identified what different job functions appreciate most about Single Pane of Glass:**



## Chief Information Security Officers value...

- A comprehensive, single-pane-of-glass view of the organisation's security posture.
- The ability to prioritise risks rapidly based on business-specific metrics.
- The confidence that there are no blind spots in the organisation's defences.

## IT Security Managers value...

- The way the Single Pane of Glass platform's unified dashboard accelerates and simplifies the oversight and implementation of security measures.
- The ease with which they can coordinate remediation actions.
- The platform's support and reassurance in managing, tracking and reporting vulnerabilities and misconfigurations, ensuring compliance and improving overall security efficiency.

## DevSecOps and Product Development Owners value...

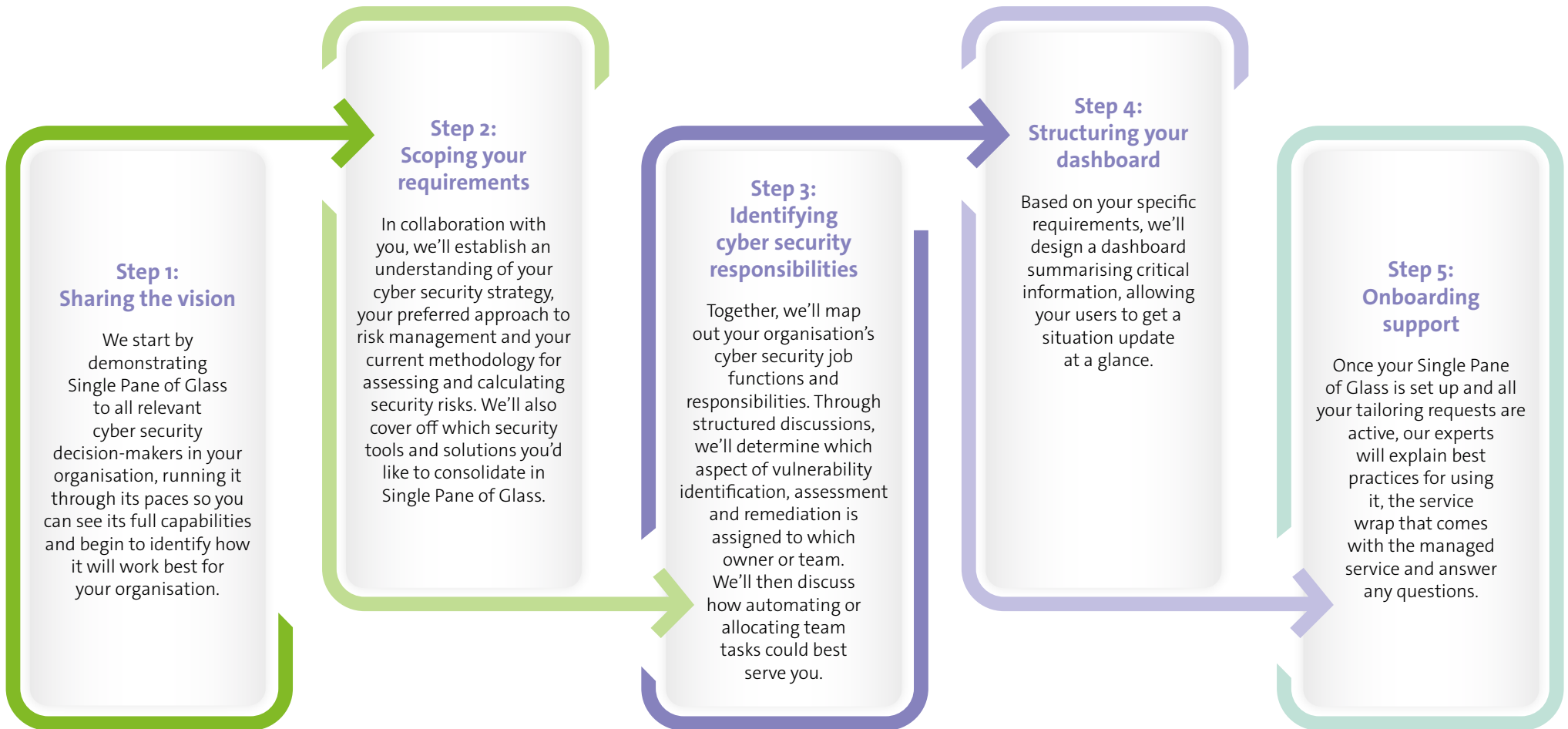
- The swift and easy integration of cyber security practices into the product development lifecycle - positioning security as an enabler of product development goals.
- How automated workflows and direct integration with ticketing and notification systems streamline the remediation process, reduce manual tasks and enhance collaboration.

## Compliance Officers value...

- The Single Pane of Glass platform's robust and comprehensive reporting capabilities that help them track and report on compliance with security standards and regulations.

# How we help you get maximum value from Single Pane of Glass

Our mission is to partner with you to make the process of identifying and remediating your cyber security vulnerabilities as straightforward, rapid and robust as possible. Single Pane of Glass is a managed service that our experts tailor to your specific requirements, moving through a staged process to make sure your version of Single Pane of Glass is ideal for your organisation.



# Why choose Resillion?

**As a global leader in managed testing services, our ethos is a customer-centric approach to streamlining and improving cyber security defences. We offer:**

## **Pioneering services**

We provide a rare combination of a RemOps platform and managed security services. This gives our clients highly effective vulnerability detection and remediation. All our technical services can be delivered through the platform, significantly elevating the customer experience. Unlike competitors who rely on outdated methods, slow processes, and static documents or PDF reports, our approach reduces client overhead and workload. Instead of adding to the noise, we effectively help clients manage their security posture with less effort.

## **Future-facing support**

We invest in research and innovation and scan the horizon for the next technological leap forward to deliver a competitive advantage to our customers. Single Pane of Glass is configured to enable our AI advances and is designed to keep you ahead of evolving security threats so that you can continue to develop and maintain your position.

## **Peace of mind**

Our platform, supported and managed by cyber security experts, relieves the strain on your teams and provides reassurance that your security posture is strong today and into the future.

## **Advanced real-time testing insights**

Our testing integration approach sets us apart from the rest of the market because our platform provides immediate visibility into vulnerabilities as they are identified, not after. This significantly reduces the time to remediation from potentially weeks or months into days or even hours.

## **A specialised Validated Findings Service**

Customers wanting a service layer for vulnerability management can commission manual validation of findings by our team of experienced security consultants, ensuring rapid identification and resolution of false positives.



## **Increase your cyber security visibility and control**

Our experts are ready to talk through your requirements and explore how Single Pane of Glass can support your cyber security.

**Get in touch to set up a demonstration.**





resill!on

Assure. Secure. Innovate.